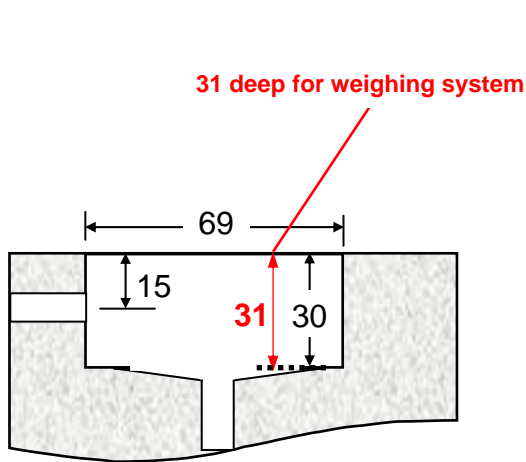


### Notes:

1. Dimensions in centimeters.
2. General tolerance of dimensions in the drawing – 0 + 1 cm.
3. Admissible floor load >30 kN/m<sup>2</sup>.
4. Recommended distance between RBT and display: 10 M.
5. Use PVC conduits of 80 mm diameter between pit and display.
6. Use cable entrances (A) and/or (B) for position of conduits. Single conduit for all cables at entrance (A) or (B) is possible.
7. The lower end of the left short side of each bed is open for 14 cm. Conduits can also be routed through this side.
8. Flat surface of 10 cm wide supports chassis.
9. Pit edging frame available as an option.
10. Equipment dimensions - each bed: 144 cm x 66 cm x 30 cm
11. Equipment dimensions with **weighing system - each bed: 144 cm x 66 cm x 31 cm**
12. Electrical connection: 3 phase 400 V / 50 Hz / 32 A, motors 2 x 5.5 kW.

<b>Product:</b>	Class 7 Brake Tester – D700/D701
<b>Description:</b>	Required Ground Works Diagram

Document no.	BOS0022
Date	01.09.2005
Created by	BOSTON

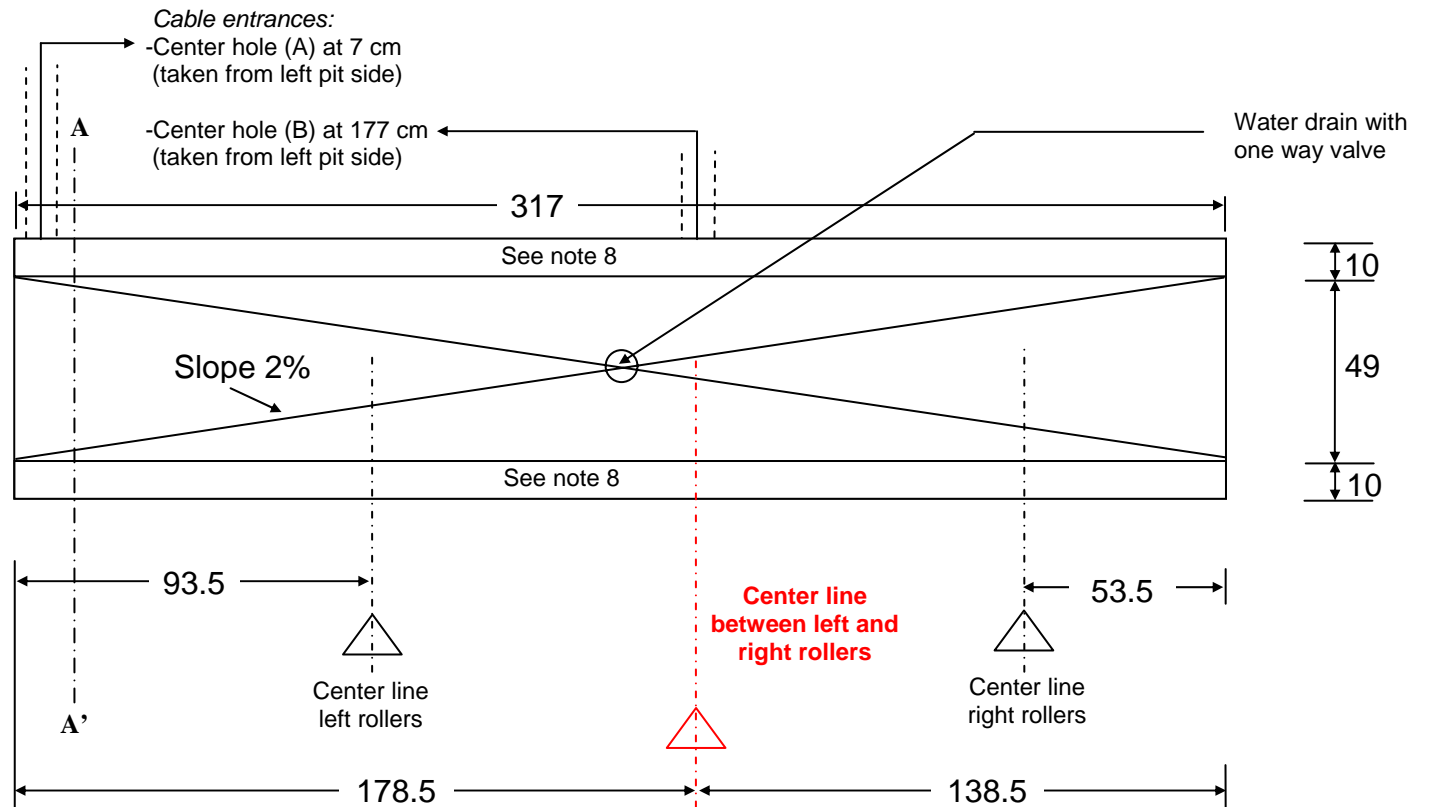


**Section A-A'**

Note: Pit depth to be increased to 31cm to accommodate weighing system.

### DISCLAIMER

This drawing is intended as a general suggestion of a floor layout. The final construction must be designed and drafted by a local engineering company, who will be responsible for complying with a local, legal and safety requirements.



**NOTE: The floor recess for the D700 is offset to the left of the testing bay centre line.**